

Putting the Transparent *Quantum Ethernet modules* Factory to work

Transparent
FACTORY[™]
Open for Business



Schneider introduces two new Quantum modules to help you step into the future of automation by entering the Transparent Factory – Schneider's innovative use of Internet technologies for the factory floor.

Transparent Factory allows you to enjoy the same ease of accessing and viewing information as on the Internet by web-enabling your factory monitoring and control system.

These two new modules, the Quantum FactoryCast Embedded Web Server, and the Quantum Ethernet I/O Scanner Module, can instantly turn any Quantum PLC into Ethernet and Internet-friendly controllers, and make them ready to enter the future of automation – today!

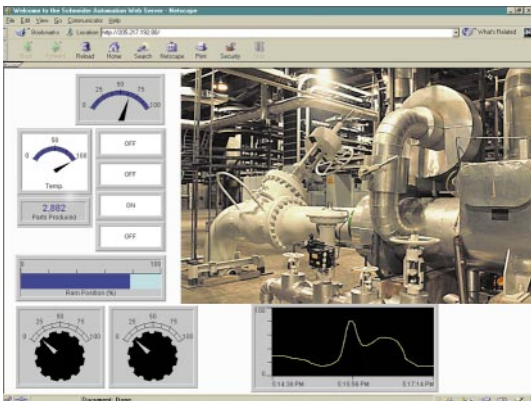
Merlin Gerin

Modicon

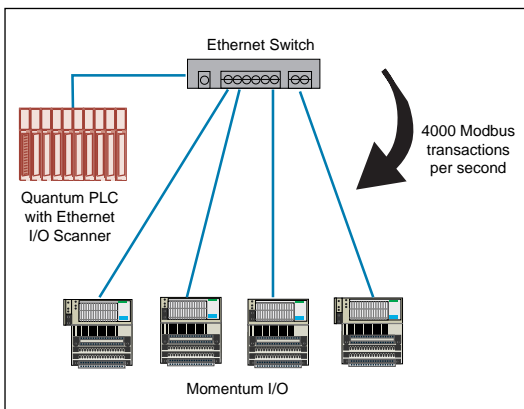
Square D

Telemecanique

Schneider
 **Electric**
We do more with electricity



Custom design your own browser views into live data and controls using off-the-shelf web design software.



Quantum Ethernet I/O scanner controls up to 64 Momentum I/O devices via Ethernet.

Quantum FactoryCast Embedded Web Server

140 NOE 771 10

The Quantum FactoryCast Embedded Web Server comes preconfigured with FactoryCast 2.0 software, providing 8 Meg of memory for uploading or downloading user customized HTML pages and factory loaded web tools.

The preloaded tools include a complete JavaBean environment that allows users to build custom designed templates for viewing live PLC data from Schneider's preconfigured JavaBean library. The templates are easy to use and can be built within any standard web browser environment, such as Netscape or Explorer, without any Java programming experience. Once configured, the module becomes a web server to anyone who can connect to it using Ethernet and a web browser (and the correct security clearance and password of course!), making your system's PLC data easy to access and available from virtually anywhere in the world.

Quantum Ethernet I/O Scanner

140 NOE 771 00

The Quantum Ethernet I/O Scanner is used to coordinate large amounts of I/O or data transfers between a Quantum PLC and up to 64 cyclically scanned I/O devices, plus up to 32 simultaneous Modbus-TCP/IP server connections utilizing Ethernet.

When designed with a properly switched Ethernet network, the module provides extremely fast (3,000+ Modbus TCP transactions per second), data collection and control of the plant floor network.

On startup, the module can use its BootP server capability to automatically assign all IP addresses to the various I/O devices, such as Momentum. All configuration tables are set up and managed using just a web browser.

Features Common to both Modules

SNMP Interface with MIB II Support	Allows the use of common IT world query tools such as "Get", "Set", and "Trap" for obtaining Ethernet statistics
Ethernet Error Log	Re-settable and accessible from a standard web page within a module
FLASH File System	All files saved to FLASH memory
10/100 Meg Copper (RJ Style) or 100 Meg Fiber Optic (MT-RJ style) Connection	Adaptable to different physical communications media
BootP Client or Server	Provides flexibility in assigning IP addresses
Programming Environment	Concept V2.2

www.schneiderautomation.com

Schneider Electric

Square D Company
1415 South Roselle Road
Palatine, IL 60173 USA
Tel: 00+ 1 847 397 2600
Fax: 00+ 1 847 925 7271

Schneider Automation Inc.
One High Street
North Andover, MA 01845-2699
Tel: 00+ (1) 978-794-0800
Fax: 00+ (1) 978-975-9541