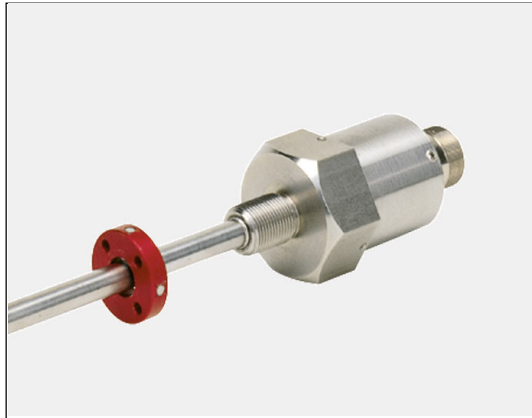
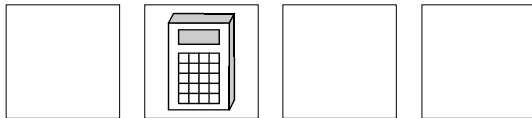


**Linear-Encoder LA-41-K SSI**

- **High Pressure Type, Makes it Possible for Installation into Hydraulic Cylinders**
- **For Linear Measurement**
- **Non Contact and Wear Free**
- **Programmable and Scaleable**
- **SSI (Synchronous Serial Interface)**
- **Housing length: 42 mm**

**7****Electrical Data**

Measurement Principle .....	Magnetostrictive
Measuring Length (Stroke) Standard (mm).....	150, 300, 500, 700, 750, 1000, 1500, 2000, 2500, 3000
	> 3000 by request
Sensor Capacity .....	max. 20 Bit
* Resolution .....	max. 0.01 mm
Operating Voltage .....	19-27 V DC
Power Dissipation (No Load) .....	< 5 Watt
Programmable via RS485 .....	PT-100N Programming Terminal
* Output Code (programmable) .....	Binary, Gray, BCD
Clock Input .....	Opto Coupler
Clock Frequency .....	95 kHz - 1 MHz
Cycle Time .....	See Dimensional Drawing
Transmission Cable Length .....	Dependent on cable Cross Section, Shielding, Clock Frequency etc....
Data Output.....	RS422 (2-wire)
Input Options	
* Forward / Reverse .....	Change direction of count
* Preset .....	Adjust absolute position to a set value
Logic Levels .....	"0" < + 2 VDC, "1" > + 8 V DC, max. 30 VDC
Pin Configuration.....	Upon Request
* Programmable Parameters	

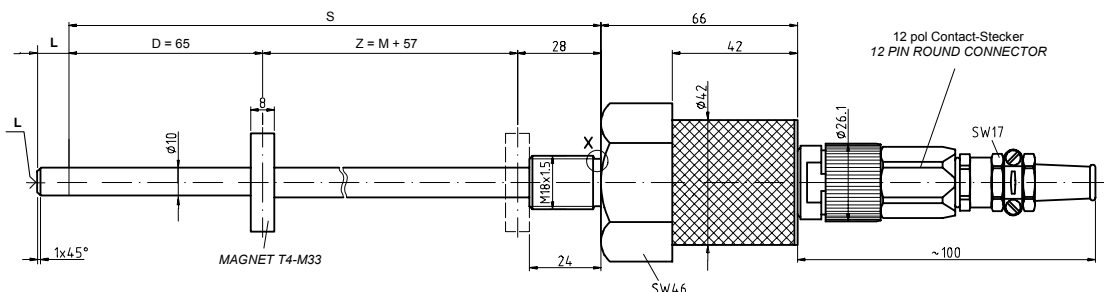
**Environmental Data**

Electromagnetic compatibility (EMC) .....	EN 61000-4-2 (IEC-801-2) / EN 61000-4-4 (IEC-801-4)
Operating Temperature .....	0°-70°C (32° to 158° F) (Optional -20° to +70°C) (-4° to 158° F)
Storage Temperature .....	-30° to +80°C (-22° to 178° F)
Relative Humidity .....	98 % (non condensing)
*Protection Class .....	IP 65 (DIN 40 050)
* The protection class of the sensor can be effected by the type of connector used.	

### Mechanical Data

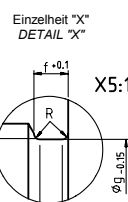
Linearity.....	< 0.05 % of Stroke Length
Repeatability.....	≤ 0.01 mm
Hysteresis.....	< 0.1 mm
Temperature Coefficient .....	< 5 µm / °C
Vibration (Sinus 50-2000 Hz)	
per DIN IEC 68-2-6.....	≤ 100 m/s <sup>2</sup> (10g)
Shock (11ms) per DIN IEC 68-2-27.....	≤ 1000 m/s <sup>2</sup> (100g)
Pressure Resistance (Option) .....	600 bar
Rod Material .....	Cr/Ni-alloy
Magnetic Field .....	< 3 mT (milli Tesla)
Operating Speed and Mounting Orientation.....	No restrictions
Magnet Type (Standard).....	T4-M33
Magnet Type( Option).....	T3-U64
Rod Mounting .....	Option
Mechanical Special Types.....	Upon Request
Connector.....	12 pin Contact Connector

### Dimensional Drawing



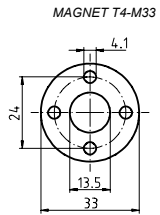
S = Stablänge  
 D = Dämpfungszone: Keine Herstellergarantie für die Meßdaten  
 M = Meßlänge: Typenbezogener Meßweg  
 Z = Zentraler Meßbereich: Typenbezogener Meßweg + 57 mm Reserve  
 L = 5 mm Zusatzlänge mit M4x5 bei Option Stabspitzenlagerung

S = TOTAL LENGTH  
 D = DAMPENING ZONE: IN THIS AREA NO MEASURING SIGNAL IS PRODUCED  
 M = STROKE LENGTH  
 Z = CENTRAL MEASURING AREA: EFFECTIVE AREA + 57 MM RESERVE  
 L = 5 MM ADDITIONAL LENGTH WITH M4x5 FOR OPTION ROD MOUNTING



Maße entsprechen Einschraubzapfen DIN 3852-F  
 DIMENSIONED TO DIN 3852-F

G	f	g	R	O-RING
M18x1.5	2.3	15.9	0.4	15.4x2.1



Meßlänge M (mm) STROKE LENGTH M (mm)	Stablänge S (mm) TOTAL LENGTH S (MM)	Zykluszeit (ms) CYCLE (ms)
150	300	1,4
300	450	1,4
500	650	1,4
700	850	1,4
750	900	1,4
1000	1150	1,8
1500	1650	2,7
2000	2150	3,6
2600	2650	4,5
3000	3150	5,4