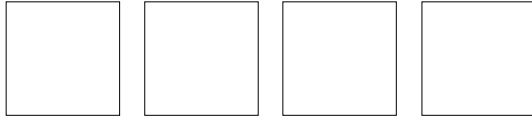


## Linear-Encoder LA-66-K SS



- **High Pressure Type, Makes it Possible for Installation into Hydraulic Cylinders**
- **For Linear Measurement**
- **Non Contact and Wear Free**
- **Start / Stop Interface**

**7**

### Electrical Data

Measurement Principle .....	Magnetostrictive
Measuring Length (Stroke) Standard (mm).....	150, 300, 500, 700, 750, 1000, 1500, 2000, 2500, 3000, > 3000 by request
Resolution .....	Dependent on external electronics
Operating Voltage	
TTL-Version .....	15-27 V DC, Power Dissipation (No Load) < 1.5 Watt
TTL-Version .....	± 15 V DC, Power Dissipation (No Load) < 1.5 Watt
RS422-Version .....	24 V DC, Power Dissipation (No Load) < 1.5 Watt
Start / Stop Interface .....	
Start / Stop-Signal .....	Start / Stop-Signal for external electronics
Data Transmission Length .....	max. 15 m with TTL-Version, max. 500 m with RS422-Version
Cycle Time .....	See Dimensional Drawing
Inputs	
Start-Signal (TTL-Version) .....	TTL-voltage ("Active-High", Impedance = 470 Ω)
Start-Signal (RS422-Version).....	Differential Input
Outputs	
Stop-Signal (TTL-Version) .....	"H" = 5 V, "L" ≤ 0.2 V ("Active-High", Impedance = 220 Ω)
Stop-Signal (RS422-Version).....	Differential Output
External Electronics .....	
	- TR-Module. AK-8, - Siemens Interface Module IP 241,
	- Philips Positioning Interface 9404 4620 0301,
	- Bernecker + Rainer,
	- Harms und Wende etc...
Pin Configuration.....	Upon Request

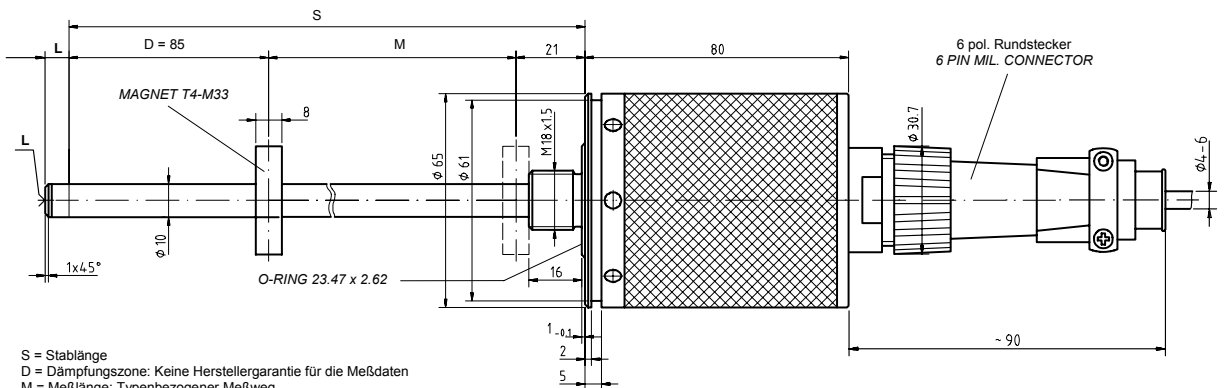
### Environmental Data

Electromagnetic compatibility (EMC) .....	EN 61000-4-2 (IEC-801-2) / EN 61000-4-4 (IEC-801-4)
Operating Temperature .....	0°-70°C (32° to 158° F) (Optional -20° to +70°C) (-4° to 158° F)
Storage Temperature .....	-30° to +80°C (-22° to 178° F)
Relative Humidity .....	98 % (non condensing)
*Protection Class .....	IP 65 (DIN 40 050)
* The protection class of the sensor can be effected by the type of connector used.	

### Mechanical Data

Linearity.....	< 0.05 % of Stroke Length
Repeatability.....	≤ 0.01 mm
Hysteresis.....	< 0.1 mm
Temperature Coefficient .....	< 5 µm / °C
Vibration (Sinus 50-2000 Hz)	
per DIN IEC 68-2-6.....	≤ 100 m/s <sup>2</sup> (10g)
Shock (11ms) per DIN IEC 68-2-27.....	≤ 1000 m/s <sup>2</sup> (100g)
Pressure Resistance (Option) .....	600 bar
Rod Material .....	Cr/Ni-alloy
Magnetic Field .....	< 3 mT (milli Tesla)
Operating Speed and Mounting Orientation.....	No restrictions
Magnet Type (Standard).....	T4-M33
Magnet Type( Option).....	T3-U64
Rod Mounting .....	Option
Mechanical Special Types.....	Upon Request
Connector.....	6 pin MIL-Connector

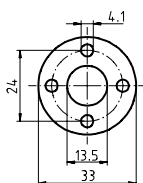
### Dimensional Drawing



S = Stablänge  
 D = Dämpfungszone: Keine Herstellergarantie für die Meßdaten  
 M = Meßlänge: Typenbezogener Meßweg  
 L = 5 mm Zusatzlänge mit M4x5 bei Option Stabspitzenlagerung

S = TOTAL LENGTH  
 D = DAMPENING ZONE: IN THIS AREA NO MEASURING SIGNAL IS PRODUCED  
 M = STROKE LENGTH  
 L = 5 MM ADDITIONAL LENGTH WITH M4x5 FOR OPTION ROD MOUNTING

MAGNET T4-M33



Meßlänge M (mm) STROKE LENGTH M (mm)	Stablänge S (mm) TOTAL LENGTH S (MM)	Zykluszeit (µs) CYCLE (µs)
150	256	120
300	406	175
500	606	310
700	806	335
750	856	340
1000	1106	450
1500	1606	615
2000	2106	890
2500	2606	1065
3000	3106	1230