

# Human/Machine Interface

Magelis™ STO, STU Small panels

Catalog

July 2013



# How to find the “Automation and Control” products

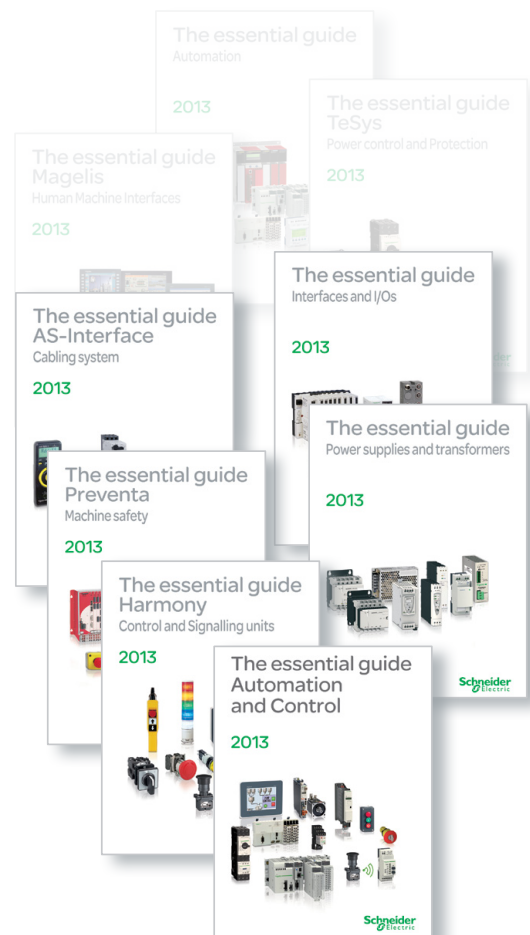
## > Catalogs

Complete product ranges



## > Essential guides




Selection of the top selling products



# General contents

<b>Selection guide</b> .....	<b>page 2</b>
■ <b>Overview</b> .....	<b>page 4</b>
■ <b>Presentation</b>	
□ Magelis™ STO, STU .....	<b>page 6</b>
■ <b>Description</b>	
□ Magelis™ STO 3.4 .....	<b>page 8</b>
□ Magelis™ STU 3.5 and STU 5.7 .....	<b>page 9</b>
■ <b>References</b>	
□ Magelis™ STO, STU .....	<b>page 10</b>
□ Separate components for Magelis™ STO, STU .....	<b>page 12</b>
■ <b>HMI software</b>	
<b>Selection guide</b> .....	<b>page 14</b>
■ <b>How to find products ?</b>	
□ Search, visualize and download .....	<b>page 16</b>
□ Access product references with adapted tools .....	<b>page 18</b>
□ Compare, select and compile .....	<b>page 20</b>
□ Check the product status, design your equipment .....	<b>page 21</b>
■ <b>Product reference index</b> .....	<b>page 22</b>

<b>Applications</b>		<b>Display of graphic pages</b>		
<b>Type of terminal</b>		Small panels with touch screen		
<b>Display</b>				
Type	Monochrome STN LCD (200 x 80 pixels), backlit - Green, orange and red, or - White, pink and red		Color QVGA TFT LCD (320 x 240 pixels)	
Capacity	3.4" (monochrome)	3.5" (color)	5.7" (color)	
<b>Data entry</b>		Via touch screen		
<b>Memory capacity</b>		16 MB Flash	32 MB Flash	
<b>Functions</b>		Limited by internal FLASH EPROM memory capacity		
Maximum number of pages	Unlimited			
Variables per page	Alphanumeric, bitmap, bargraph, gauge, curves, buttons, LEDs			
Representation of variables	32 groups of 64 recipes			
Recipes	Yes, with log			
Curves	Yes			
Alarm logs	Access to the PLC real-time clock			
Real-time clock	-			
Alarm relay	-			
Buzzer	Yes			
<b>Communication</b>		Asynchronous serial link RS 232C/RS 485 (1)    RS 232C/RS 485 RS 232C using Zelio protocol (2) Downloadable protocols Uni-TE, Modbus and for PLC brands: Allen-Bradley, Omron, Mitsubishi, Siemens Printer link USB for serial or parallel printer USB ports 1 host type A and 1 device type mini-B Networks 1 Ethernet TCP/IP port (10BASE-T/100BASE-TX) (3)    1 Ethernet TCP/IP port (10BASE-T/100BASE-TX)		
<b>Development software</b>		Vijeo Designer (on Windows XP Professional and Windows 7 Business 32-bit and 64-bit)		
<b>Operating system</b>		Magelis		
<b>References</b>		<b>HMISTO5●●</b>	<b>HMISTU655</b> <b>HMISTU655W</b>	<b>HMISTU855</b> <b>HMISTU855W</b>
<b>Page</b>		10 (1) Only HMISTO511/512. (2) Only HMISTO501. (3) Only HMISTO531/532.		

<b>Display of text messages and/or semi-graphic pages</b>		<b>Display of text messages and/or semi-graphic pages</b>		<b>Display of text messages and/or semi-graphic pages</b>	
<b>Small panels with keypad</b>		<b>Small panels with keypad</b>		<b>Small panels with touch screen and keypad</b>	
					
Green backlit monochrome LCD, height 5.5 mm or Green, orange or red backlit monochrome LCD, height 4.34...17.36 mm		Green, orange or red backlit monochrome LCD, height 4.34...17.36 mm		Green, orange or red backlit monochrome matrix LCD (198 x 80 pixels), height 4...16 mm	
2 lines of 20 characters or 1 to 4 lines of 5 to 20 characters (monochrome)		1 to 4 lines of 5 to 20 characters (monochrome)		2 to 10 lines of 5 to 33 characters (monochrome)	
Via keypad with 8 keys (4 customizable)		Via keypad with ■ 12 function keys or numeric entry (depending on context) ■ 8 service keys		Via keypad with ■ 4 function keys ■ 8 service keys	
512 KB Flash		512 KB Flash EPROM		512 KB Flash EPROM	
128/200 application pages 256 alarm pages 40...50		128/200 application pages 256 alarm pages 40...50, bargraph, buttons, LEDs		200 application pages 256 alarm pages 50	
Alphanumeric		Alphanumeric		Alphanumeric, bargraph, buttons, LEDs	
Yes		Yes		Yes	
Yes (5)		Yes		Yes	
Access to the PLC real-time clock		Access to the PLC real-time clock		Access to the PLC real-time clock	
-		-		-	
-		-		Yes (4)	
RS 232C/RS 485		RS 232C/RS 485		RS 232C/RS 485	
Uni-TE, Modbus and for PLC brands: Allen-Bradley, Omron, Mitsubishi, Siemens		Uni-TE, Modbus and for PLC brands: Allen-Bradley, Omron, Mitsubishi, Siemens		Uni-TE, Modbus and for PLC brands: Allen-Bradley, Omron, Mitsubishi, Siemens	
RS 232C serial link (5)		RS 232C serial link (5)		RS 232C serial link (5)	
-		-		-	
-		-		-	
Vijeo Designer Lite (on Windows 2000 Professional, Windows XP Professional and Windows Vista Business 32-bit)		Vijeo Designer Lite (on Windows 2000 Professional, Windows XP Professional and Windows Vista Business 32-bit)		Vijeo Designer Lite (on Windows 2000 Professional, Windows XP Professional and Windows Vista Business 32-bit)	
Magelis		Magelis		Magelis	
<b>XBTN●●●●</b>		<b>XBTR●●●</b>		<b>XBTRT●●●</b>	
Please refer to our website <a href="http://www.schneider-electric.com">www.schneider-electric.com</a> .					
(4) Only XBTRT511.					
(5) Depending on model.					

# Operator dialogue terminals

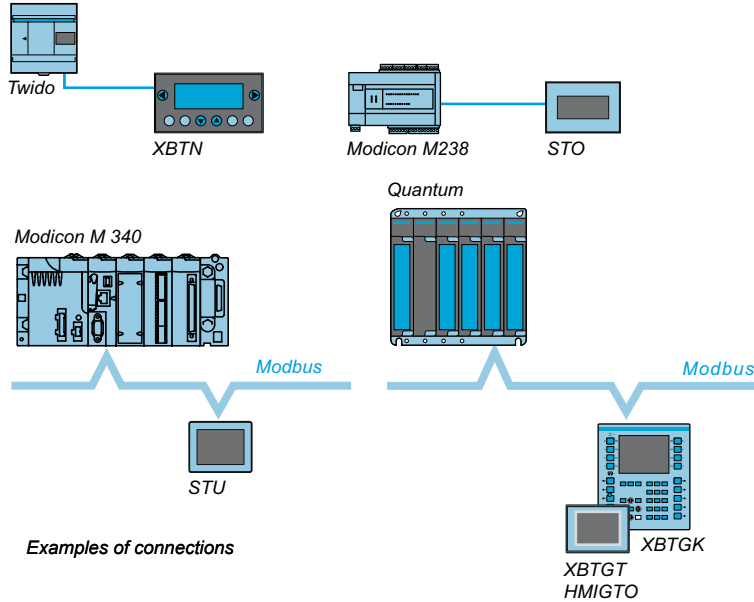
## Architectures, connection to automation systems

### Presentation

Magelis™ operator dialogue terminals communicate with automation system equipment:

- Via serial link
- By means of integration into an Ethernet TCP/IP architecture

### Communication via serial link



All Magelis terminals feature an integrated RS 232 C or RS 422/485 asynchronous serial link.

Use of the Uni-TE or Modbus protocol makes it easy to set up communication with Schneider Electric PLCs.

Third-party protocols enable connection to PLCs offered by major manufacturers on the market:

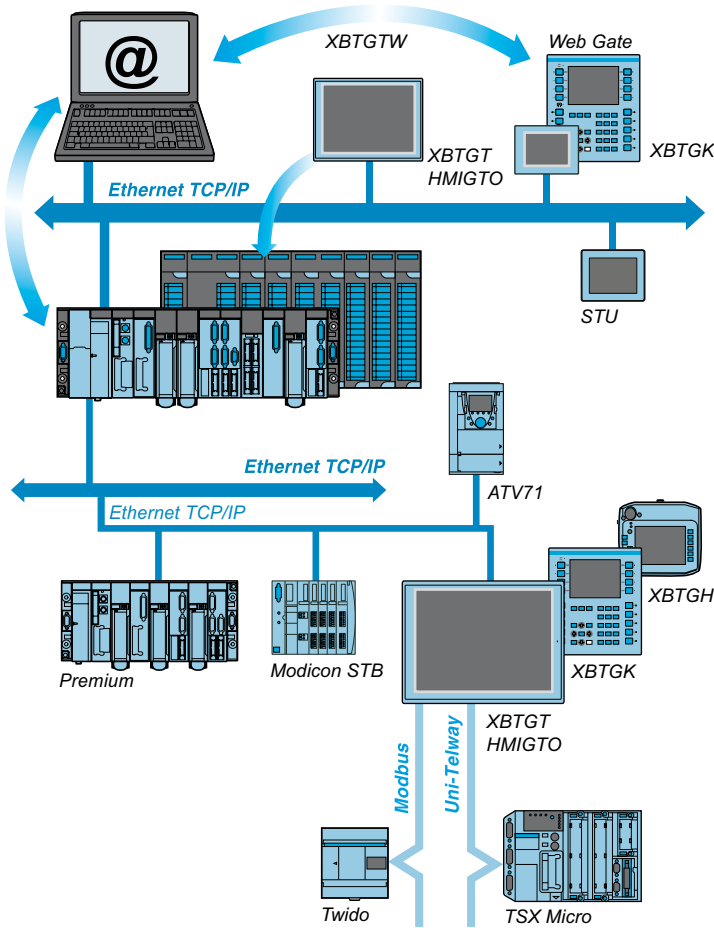
- DF1, DH485 for Allen-Bradley PLCs
- SysmacWay for Omron PLCs
- MPI/PPI for Siemens Simatic S7 PLCs
- Mitsubishi Melsec FX PLC

# Operator dialogue terminals

## Architectures, connection to automation systems

### Presentation (continued)

#### Integration into an architecture with Ethernet TCP/IP network



Automation platforms provide transparent routing of Uni-TE or Modbus messages from a TCP/IP network to a Uni-TE or Modbus network and vice versa.

The various services offered for the terminals are:

- **Modbus TCP/IP messaging** (for XBTGK, XBTGH, XBTGTW, XBTGT and HMIGTO, access with Ethernet TCP/IP Modbus protocol)
- **Browse function** with XBTGTW or standard PC
- **Web Gate function:** Diagnostics to remotely control the application
- **FTP server:** Transfer of data files with the terminal
- **Data Sharing function:** Data exchange on Ethernet between 8 terminals (maximum)
- **E-mail function**



Magelis STO 3.4" Small Panel



Magelis STU 3.5" Small Panel



Magelis STU 5.7" Small Panel



Exploded view of Magelis STU Small Panel: Simple installation using 22 mm diameter hole

### Presentation

The Magelis Small panels offer includes the following touch screen terminals:

- Magelis STO, with 3.4" monochrome screen, available with 2 different types of backlighting:
  - Green, orange, red
  - White, pink, red
- Magelis STU, with 3.5" and 5.7" TFT color screens.

### Operation

The features of Magelis STO and STU terminals draw on key technological innovations:

- All Magelis STO and STU models are equipped with:
  - 2 USB V2.0 ports for data transfer
- Magelis STU and STO531/532 models feature:
  - 1 RJ45 port, enabling integration of an Ethernet TCP/IP network and the use of the services associated with this (in particular, the Web Gate function)
- The Magelis STO501 model features:
  - 1 RS 232C serial link port (9-way removable screw terminal block), enabling direct communication with the Zelio Logic SR2/SR3 range of controllers (see page 7)

### No panel cut-out required to install Magelis STU models

No panel cut-out is required to install a Magelis STU Small Panel. All you need to do is drill a hole measuring 22 mm in diameter - just as if you were installing a pushbutton.

The front module (comprising the screen) is connected to the rear module (comprising the terminals and connectors). The two modules are fixed together via a hole measuring 22 mm in diameter.



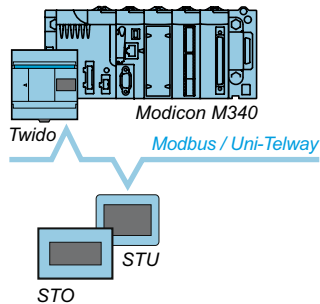
Display of a video sequence

#### Configuration

Magelis STO/STU terminals can be configured using Vijeo Designer software in a Windows XP Professional or Windows 7 Business (32-bit and 64-bit) environment.

Vijeo Designer software boasts an advanced user interface with many configurable windows, enabling operator dialogue projects to be developed quickly and easily.

See page 14.



Example of serial link architecture

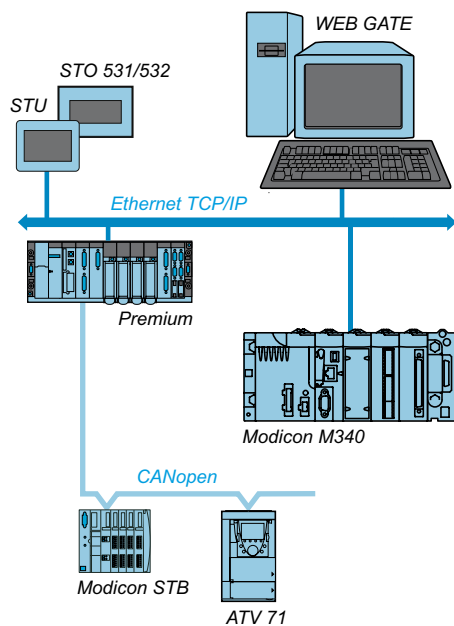
#### Communication

Magelis STO/STU terminals communicate with PLCs via an integrated serial link, using the following communication protocols:

- **Schneider Electric** (Uni-TE, Modbus)
- **Third-party**: Mitsubishi Electric, Omron, Allen-Bradley and Siemens

The Magelis STO501 terminal is dedicated exclusively to communication with Zelio Logic SR2/SR3 range controllers. It communicates with these controllers via a direct connection cable SR2CBL09 (see page 13), using Zelio protocol, which is included in Vijeo Designer V6.1.

Magelis STU and STO531/532 terminals are connected on Ethernet TCP/IP networks via Modbus TCP or a third-party protocol.



Example of Ethernet TCP/IP network architecture



# Operator dialogue terminals

## Small panels with touch screen

### Magelis™ STO 3.4"

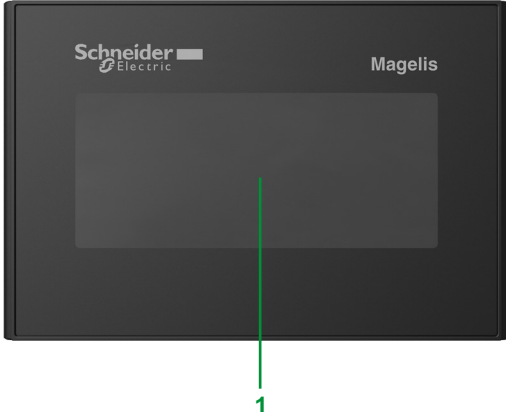
#### Description

#### Magelis STO 3.4" Small panels

#### Front panel

The front panels of Magelis STO Small panels comprise:

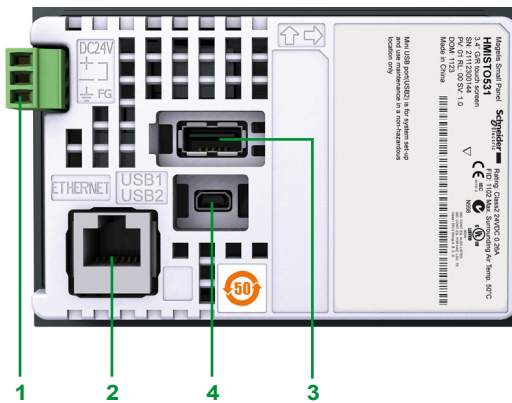
- 1 A touch screen for displaying synoptic views (3.4" backlit monochrome) with:
  - Green, orange or red backlighting for STO511, STO531 and STO501 terminals
  - White orange or red backlighting for STO512 and STO532 terminals



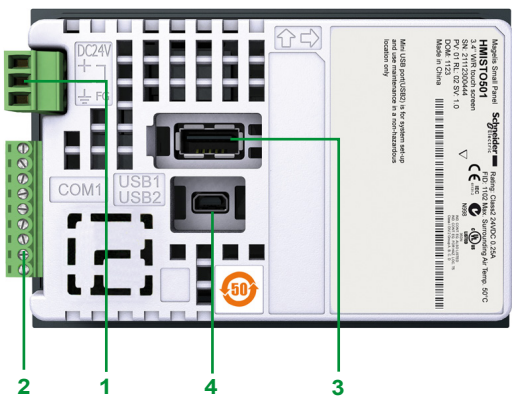
#### Rear panel

Magelis STO Small panels have the following on the rear panel:

- 1 A removable screw terminal block for 24 V  $\bar{\text{~}}$  power supply
- 2 A connector for connecting to PLCs or controllers, depending on the terminal model:
  - Magelis STO511/512: An RJ45 (COM1) connector for RS 232C or RS 485 serial link
  - Magelis STO531/532: An RJ45 (ETHERNET) connector for Ethernet 10BASE-T/100BASE-TX link
  - Magelis STO501: A 9-way removable screw terminal block (COM1) for RS 232C serial link using Zelio protocol
- 3 A USB type A host connector for:
  - Connection of a peripheral device
  - Connection of a USB memory stick
  - Application transfer
- 4 A USB mini-B device connector for application transfer



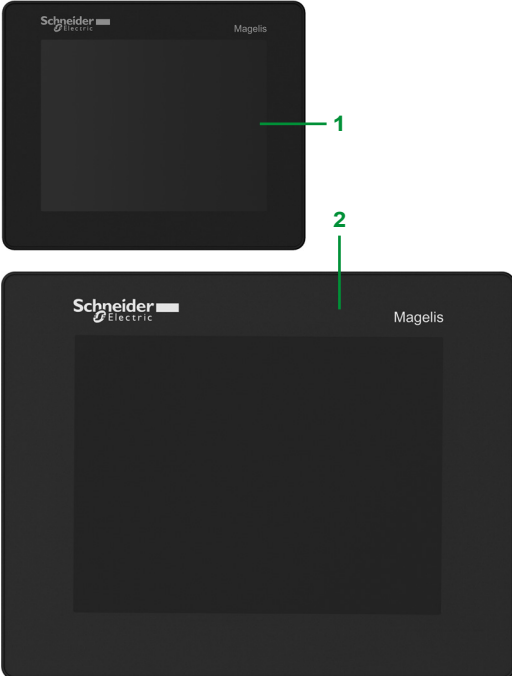
Magelis STO511/512/531/532 Small panels



Magelis STO501 Small Panel

#### Description

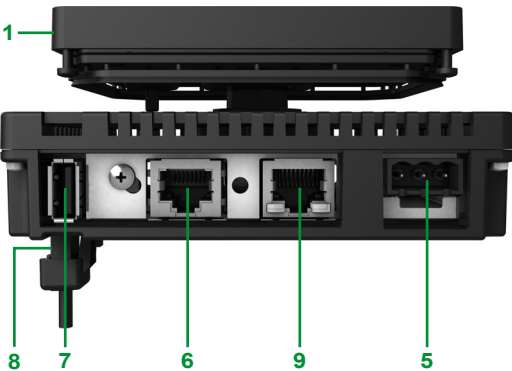
##### Magelis STU 3.5" and STU 5.7" Small panels



##### Front module

The front panels of Magelis STU Small panels comprise, depending on the model:

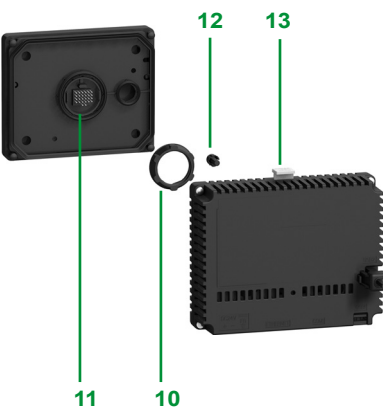
- 1 Magelis STU655: A touch screen for displaying synoptic views (3.5" color TFT)
- 2 Magelis STU855: A touch screen for displaying synoptic views (5.7" color TFT)
- 3 Magelis STU655W: STU655 touch screen without Schneider logo on front face
- 4 Magelis STU855W: STU855 touch screen without Schneider logo on front face



##### Rear of product

Magelis STU655/655W and Magelis STU 855/855W Small panels have the following on the rear:

- 5 A removable screw terminal block for 24 V  $\sim$  power supply
- 6 An RJ45 connector for RS 232C or RS 485 serial link connection to PLCs (COM1)
- 7 A USB type A host connector for:
  - Connection of a peripheral device
  - Connection of a USB memory stick
  - Application transfer
- 8 A USB mini-B device connector for application transfer (on the left-hand side)
- 9 An RJ45 connector for the Ethernet TCP/IP 10BASE-T/100BASE-TX link



##### Fixing system

A Magelis STU Small panel is made up of a front module (comprising the screen) and a rear module (comprising the CPU plus terminals and connectors). The two modules are fixed together via a hole measuring 22 mm in diameter. The fixing system contains the following elements:

- 10 A fixing nut
- 11 A seal
- 12 An anti-rotation tee (can be used as an option)
- 13 A release mechanism: simply press to separate the two modules once they have been fixed together

# Operator dialogue terminals

## Small panels with touch screen

### Magelis™ STO, STU



HMISTO511

Magelis STO monochrome touch screen terminals						
3.4" screen						
Type of screen	Number of ports	Application memory capacity	Compact Flash memory	Embedded Ethernet	Reference	Weight kg/lb
STN Green, orange, red	1 COM1 (1) 2 USB	16 MB	No	–	HMISTO511	1.000/ 2.205
	1 ETHERNET (2) 2 USB	16 MB	No	1	HMISTO531	1.000/ 2.205
STN White, pink, red	1 COM1 (1) 2 USB	16 MB	No	–	HMISTO512	1.000/ 2.205
	1 ETHERNET (2) 2 USB	16 MB	No	1	HMISTO532	1.000/ 2.205
STN Green, orange, red	1 COM1 (1) 2 USB	16 MB	No	–	HMISTO501	1.000/ 2.205



HMISTU655

Magelis STU color touch screen terminals						
Type of screen	Number of ports	Application memory capacity	Compact Flash memory	Embedded Ethernet	Reference	Weight kg/lb
3.5" screen						
TFT	1 COM1 (1) 1 ETHERNET (2) 2 USB	32 MB	No	1	HMISTU655	1.000/ 2.205
Without logo on front face	1 COM1 (1) 1 ETHERNET (2) 2 USB	32 MB	No	1	HMISTU655W	1.000/ 2.205
5.7" screen						
TFT	1 COM1 (1) 1 ETHERNET (2) 2 USB	32 MB	No	1	HMISTU855	–
Without logo on front face	1 COM1 (1) 1 ETHERNET (2) 2 USB	32 MB	No	1	HMISTU855W	–



HMISTU855

Software			
Configuration software			
Description	Operating system	Reference	Weight kg/lb
Video Designer	Windows XP Professional Windows 7 Business (32-bit and 64-bit)	See page 14	–

(1) RS 232C or RS 485 serial link.

(2) Ethernet 10BASE-T/100BASE-TX link.

(3) RS 232C serial link using Zelio protocol, for direct connection to Zelio Logic SR2/SR3 controllers.

# Operator dialogue terminals

## Small panels with touch screen

### Magelis™ STO, STU

Separate components (1)				
Description	Description/function	Compatible with	Reference	Weight kg/lb
<b>Accessories kit</b>	Contains: <ul style="list-style-type: none"> <li>■ An anti-rotation tee</li> <li>■ A USB A type clip</li> <li>■ A USB mini-B type clip</li> <li>■ An adaptor panel for mounting on an enclosure of 1 mm in thickness</li> </ul>	HMISTU655 HMISTU655W HMISTU855 HMISTU855W	<b>HMIZSUKIT</b>	–
<b>Protective sheets</b>	5 peel-off sheets for protecting the screen	HMISTO5●●	<b>HMIZS60</b>	–
		HMISTU655 HMISTU655W	<b>HMIZS61</b>	–
		HMISTU855 HMISTU855W	<b>HMIZS62</b>	–
<b>USB clip</b>	Holds the USB A type connection in place	HMISTO5●●	<b>HMIZSCLP1</b>	–
	Holds the USB mini-B type connection in place	HMISTO5●●	<b>HMIZSCLP3</b>	–
Replacement parts (1)				
Description	Description/function	Compatible with	Reference	Weight kg/lb
<b>Nuts</b>	Set of 10 nuts, 22 mm (front module of the HMI STU is fixed to the enclosure using a 22 mm nut (see page 6))	HMISTU655 HMISTU655W HMISTU855 HMISTU855W	<b>ZB5AZ901</b>	–
<b>Bezel key</b>	Enables the fixing nut to be tightened	HMISTU655 HMISTU655W HMISTU855 HMISTU855W	<b>ZB5AZ905</b>	–
<b>Seal</b>	Dust and damp proofs the connection between the front and rear modules of the HMISTO5●●	HMISTO5●●	<b>HMIZS50</b>	–
<b>Front display</b>	Front display for 3.5" screen	HMISTU655	<b>HMIS65</b>	–
	Front display for 3.5" screen without Schneider logo	HMISTU655W	<b>HMIS65W</b>	–
	Front display for 5.7" screen	HMISTU855	<b>HMIS85</b>	–
	Front display for 5.7" screen without Schneider logo	HMISTU855W	<b>HMIS85W</b>	–
<b>Rear module</b>	Rear module for STU product	HMISTU655 HMISTU655W HMISTU855 HMISTU855W	<b>HMIS5T</b>	–

(1) Non-exhaustive list: other separate components and replacement parts are listed on pages 12 onwards.

## Operator dialogue terminals

## Small panels

Separate components for Magelis™ STO, STU

Accessories				
Type	Compatibility	Sold in lots of	Unit reference	Weight kg/lb
<b>Spring clips</b> (replacement parts)	HMISTO	12	XBTZ3002	0.200/ 0.441
<b>Power supply connector</b> (replacement parts)	HMISTO	5	HMIZSPWO	–
	HMISTU	5	XBTZGPWS1	–

Connection to PCs and printers					
Used	Compatibility	Length m/ft	Peripheral side connector	Reference	Weight kg/lb
<b>USB cable for PC connection</b> (1)	HMISTO/STU	2.5/ 8.20	USB type A male	XBTZG935	–
	HMISTO/STU	1.8/ 5.91	USB type mini-B male	BMXXCAUSBH018	0.230/ 0.507
<b>Serial printer cables</b>	HMISTO/STU	1.8/ 5.91	9-way male SUB-D	HMIZURS	–
<b>USB host extension cable</b>	HMISTO/STU	2/ 6.56	USB type A male, dust and damp proof	XBTZGUSB	0.220/ 0.485
<b>USB device extension cable</b>	HMISTO/STU	2/ 6.56	USB type mini-B male, dust and damp proof	HMIZSUSBB	–

(1) Adaptor to be used with XBTZ925 cable.

## Cables for connecting Magelis terminals

Type of PLC to be connected	Type of connector	Physical link	Protocol	Length m/ft	Reference	Weight kg/lb
<b>Direct connection of HMI STO/STU terminals to Schneider Electric PLCs</b>						
Twido, Modicon Nano, Modicon TSX Micro, Modicon Premium	Mini-DIN	RS 485	Modbus/Uni-TE	2.5/8.20	<b>XBTZ9780</b>	–
				10/32.81	<b>XBTZ9782 (1)</b>	–
Modicon M340	RJ45	RS485	Modbus	2.5/8.20	<b>XBTZ9980</b>	–
				10/32.81	<b>XBTZ9982 (1)</b>	–

## Direct connection of the HMISTO501 terminal to Zelio Logic SR2/SR3 controllers

Zelio Logic SR2/SR3 (2)	Programming port (specifically for Zelio Logic)	RS 232C	Zelio	2.5/8.20	<b>SR2CBL09</b>	–
-------------------------	---	---------	-------	----------	-----------------	---

## Direct connection of Magelis STO/STU terminals to Modicon STB I/O (3)

Modicon STB	HE13 (NIM)	RS 232	Modbus	2.5/8.20	<b>XBTZ9715</b>	–
-------------	------------	--------	--------	----------	-----------------	---

## Direct connection of Magelis STO/STU terminals to Schneider Electric motor starters and drives (1)

TeSys U, T ATV 312/32/61/71 variable speed drives ATS 48 starter Lexium 32, Preventa XPSMC	RJ45	RS 485	Modbus	2.5/8.20	<b>XBTZ9980</b>	–
---	------	--------	--------	----------	-----------------	---

## Direct connection of Magelis STO/STU terminal to third-party PLCs (3)

Allen-Bradley	SLC5	9-way male SUB-D	RS 232	DF1	2.5/8.20	<b>XBTZ9734</b>	–
		Micro-logix	Micro-logix 1000	RS 232	DF1	2.5/8.20	<b>XBTZ9733</b>
Mitsubishi	FX	8-way female mini-DIN	RS 232/ RS 422 converter	Melsec FX	2.5/8.20	<b>XBTZ980 + (4)</b>	–
Omron	CPM1, CPM2, CJ1, CS1	9-way male SUB-D	RS 232	Sysmacway	2.5/8.20	<b>XBTZ9743</b>	–
Siemens	S7 (PG)	9-way male SUB-D	RS 485	PPI	2.5/8.20	<b>XBTZG9721</b>	0.210/ 0.463

## Bus and network connections for Magelis STO/STU terminals

Type of bus/network	Tap-off units	Type of connector	Length	Reference	Weight kg/lb
Uni-Telway serial link	Connection box TSXPACC01	8-way female mini-DIN	2.5/8.20	<b>XBTZ9780</b>	0.180/ 0.397
Modbus serial link	8-port Modbus splitter box LU9GC3, Modbus tap-off, TWDXCAISO, TWDXCAT3RJ	RJ45	2.5/8.20	<b>XBTZ9980</b>	–

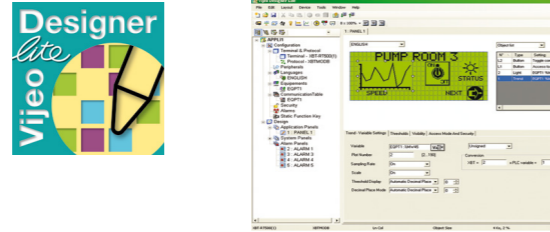
(1) For Magelis XBTN200/N400/R400/RT500, use a cable with adaptor **XBTZRTPW** and a 5 V  $\pm$  power supply.

(2) Cable included with 9-way removable screw terminal block.

(3) For **XBTRT500**, use a cable with adaptor **XBTZRTPW** and a 5 V  $\pm$  power supply.

(4) Adaptor **XBTZG939** to be used with cables with " + (4) " after the reference.

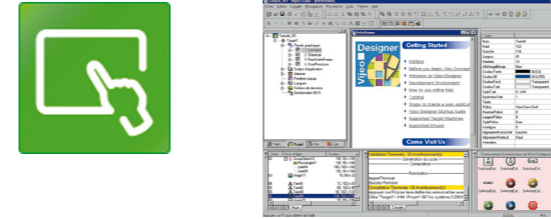
**Applications** Traditional architecture, HMI executed on PC platform or dedicated terminal  
Configuration software for operator dialogue applications



<b>Compatible products</b>	Type	Magelis™ XBTN/R/RT Small panels (1)
	Maximum number of targets	1
	Operating system on terminals	Proprietary Magelis
<b>Functions</b>	Reading/writing of PLC variables	Yes
	Display of variables	Yes
	Data processing	–
	Sharing of variables between HMI applications	–
	Saving of variables to external database	–
<b>Internationalization</b>		–
<b>Development of graphic applications</b>	Native library of graphic objects	Yes
	Curves and alarms	Yes (2)
	Scripts	–
<b>Communication between HMI application and PLCs</b>		Via I/O drivers: Schneider Electric or third party protocols (Mitsubishi, Omron, Rockwell Automation, Siemens) (3)
<b>Uploading of applications</b>		Yes
<b>Simulation of HMI applications</b>		Yes
<b>Recipe management</b>		–
<b>Report and barcode printing</b>		–
<b>Screen capture</b>		–
<b>Access security</b>		Linked to user profiles
<b>Interface languages</b>		Screens, online help and documentation in electronic format available in 6 languages: English, French, German, Italian, Simplified Chinese and Spanish
<b>OS compatibility</b>		Windows XP Professional, Windows Vista Business (32-bit), Windows 2000 Professional
<b>Software type</b>		<b>Vijeo Designer™ Lite</b>
<b>Page</b>		Please refer to our website <a href="http://www.schneider-electric.com">www.schneider-electric.com</a> .

(1) All Magelis XBT and Magelis GTO terminals behave transparently on restoration of power.  
(2) Depending on compatible product.  
(3) For protocols supported, please refer to our website [www.schneider-electric.com](http://www.schneider-electric.com).

**Applications** Traditional architecture, HMI executed on PC platform or dedicated terminal  
Configuration software for operator dialogue applications



<b>Compatible products</b>	Type	Magelis™ STO/STU Small panels Magelis™ XBTGT/GK/GH/GTW and Magelis™ GTO Advanced panels (1) Magelis™ industrial PCs
	Maximum number of targets	32
	Operating system on terminals	Proprietary for Magelis STO/STU, Magelis XBTGT/GK/GH and Magelis GTO Windows XP embedded for Magelis GTW
<b>Functions</b>	Reading/writing of PLC variables	Yes, up to 8000 internal and external variables
	Display of variables	Yes
	Data processing	Yes, using expression editor or Java programming
	Sharing of variables between HMI applications	Up to 300 variables between 8 terminals, without router PLC Proprietary protocol above TCP/IP
	Saving of variables to external database	Yes, with the Intelligent Data Service extension
<b>Internationalization</b>		Up to 15 languages supported by 34 western alphabets, 4 Asian alphabets and 2 middle eastern alphabets embedded in the application
<b>Development of graphic applications</b>	Native library of graphic objects	Yes
	Curves and alarms	Yes, with log
	Scripts	Java
<b>Communication between HMI application and PLCs</b>		Via I/O drivers: Schneider Electric or third party protocols (Mitsubishi, Omron, Rockwell Automation, Siemens) (3)
<b>Uploading of applications</b>		Yes
<b>Simulation of HMI applications</b>		Yes
<b>Recipe management</b>		Yes, up to 32 groups, 1024 ingredients for 256 recipes per group, proprietary or CSV format, complete multilingual support for labels and ingredients
<b>Report and barcode printing</b>		On the fly alarms, log data. Up to 9999 active alarms, record or logs Main barcode types supported: UPC-A, UPC-E, JAN/EAN8, JAN/EAN13, ITF, CODE39, CODE93, CODE128, CODABAR (NW-7)
<b>Screen capture</b>		Yes, for Magelis XBTGT (XBTGT1105 and higher), Magelis GTO and Magelis industrial PCs. JPEG format
<b>Access security</b>		Linked to user profiles
<b>Interface languages</b>		Screens, online help and documentation in electronic format available in 7 languages: English, French, German, Italian, Brazilian Portuguese, Simplified Chinese and Spanish
<b>OS compatibility</b>		Windows XP Professional, Windows 7 Business (32-bit and 64-bit)
<b>Software type</b>		<b>Vijeo Designer™</b>
<b>Page</b>		Please refer to our website <a href="http://www.schneider-electric.com">www.schneider-electric.com</a> .

(1) All Magelis XBT and Magelis GTO terminals behave transparently on restoration of power.  
(2) Depending on compatible product.  
(3) For protocols supported, please refer to our website [www.schneider-electric.com](http://www.schneider-electric.com).

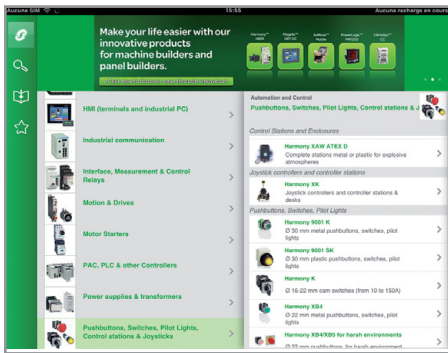
# Search, visualize, and download

Use your tablet or your PC to quickly access detailed and comprehensive information on our products

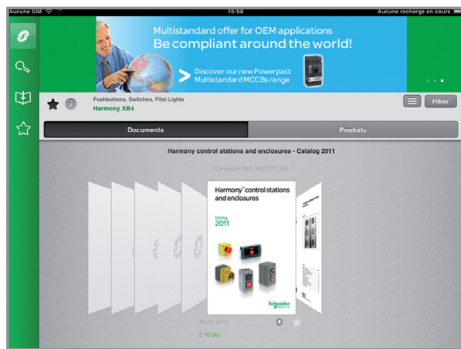


## Tablets

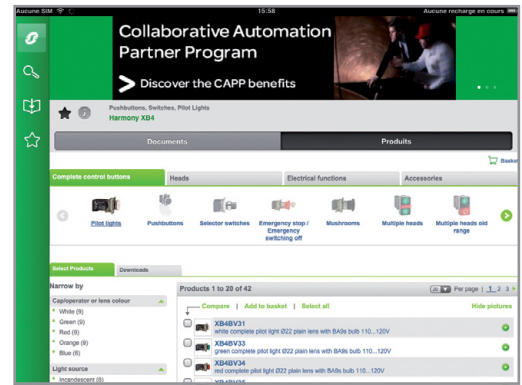
Application name: "Automation Library by Schneider Electric"



Product ranges displayed by function



Dynamic catalogs (hyperlinks, video, ...)



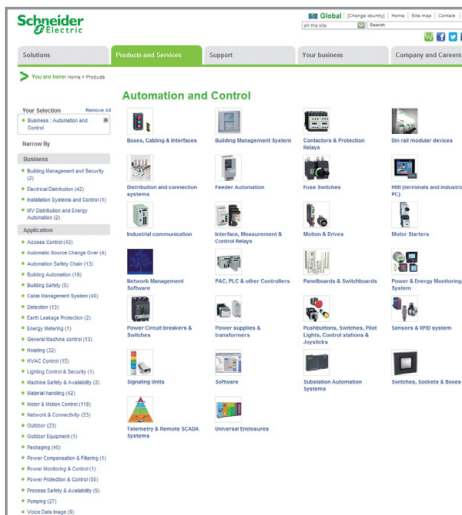
Product selector: dynamic filters to get easily your part number



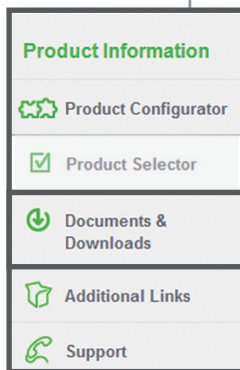
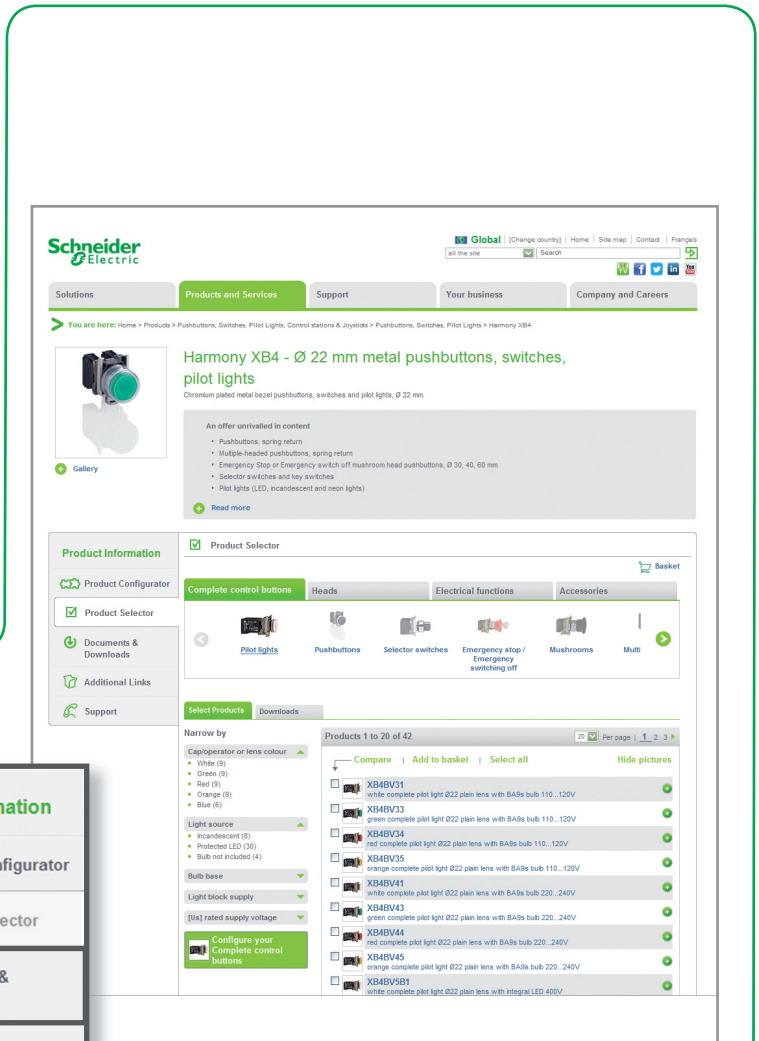


# Personal computer

Path: [www.schneider-electric.com](http://www.schneider-electric.com) > **Products and Services** > Automation and control > Product offer



**Product ranges displayed by function**



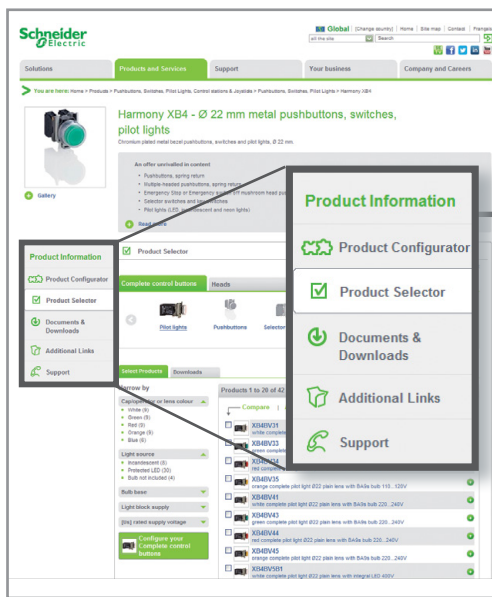
**Dynamic catalogs (hyperlinks, video, ...)**

**Product selector: dynamic filters to get easily your part number**

# Access product references with adapted tools

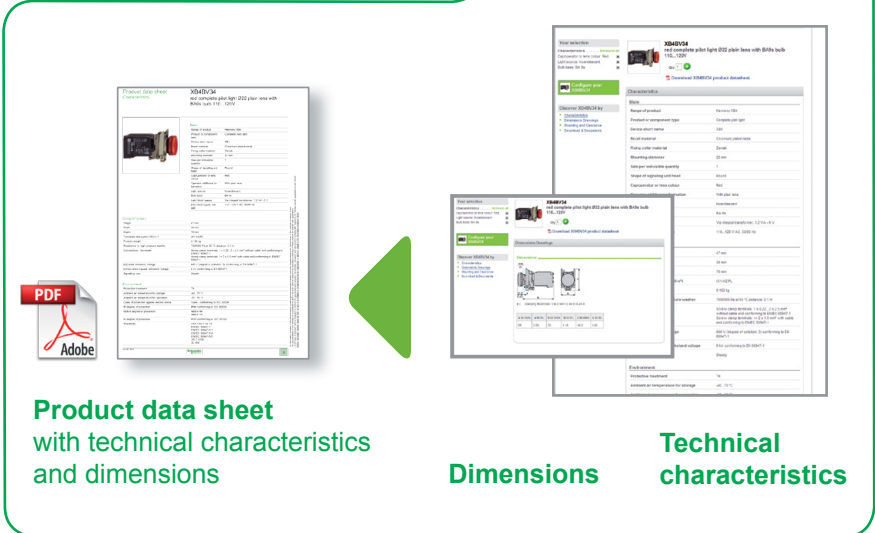
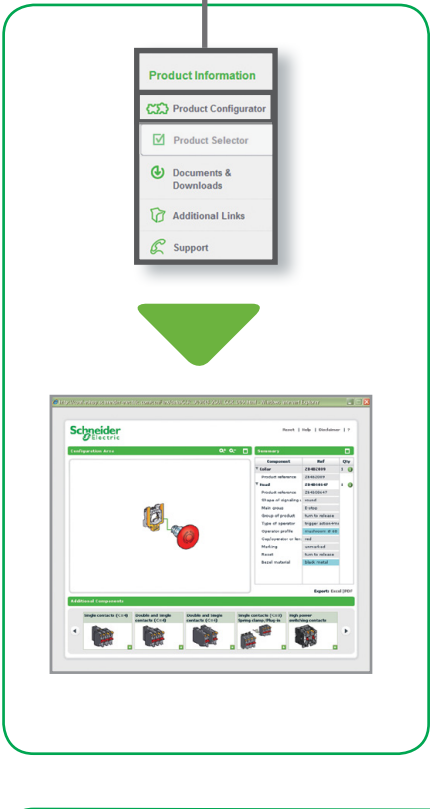


Path: [www.schneider-electric.com](http://www.schneider-electric.com) > **Products and Services** > Automation and control > ... > Product offer



**Graphic product configurator**  
Select the right product with just a few clicks

**Dynamic product selector**  
Visualize product characteristics and dimensions



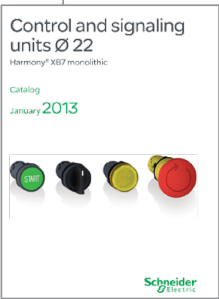
# Documents and downloads

Visualize and download catalogs, technical publications, certificates, etc.

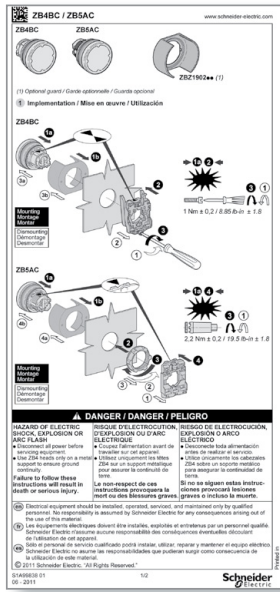
- Product Information
- Product Configurator
- Product Selector
- Documents & Downloads
- Additional Links
- Support

The screenshot displays the product page for 'Harmony XB4 - Ø 22 mm metal pushbuttons, switches, pilot lights'. It includes a product image, a brief description, and a 'Documents & Downloads' section with a table of available documents.

Title	Reference	Size	View
Response for Safety Voltage switch (Phase)	SA0207121012102	Jan 28, 2012	63.08 KB
Response for Safety Voltage switch (Neutral)	SA0207121012103	Jan 19, 2012	17.16 KB
The essential guide of Control Panel	PA000100000000	Jan 18, 2012	689.06 KB
The essential guide for Safety Voltage switch	SA0207121012104	Jan 18, 2012	11.06 KB
The essential Harmony line series of components	SA0207121012105	Jan 18, 2012	13.05 KB
The essential Accessories of Control Panel series	SA0207121012106	Jan 18, 2012	13.05 KB
The essential guide of Accessories & Control Panel	SA0207121012107	Jan 18, 2012	144.05 KB
Response paper for 'Harmony' Control panel (1)	AB007120	Jan 12, 2012	21.05 KB
Pages disponibles pour le catalogue 'Harmony' (1)	AB007120	Jan 12, 2012	17.02 KB
Pages disponibles pour le catalogue 'Harmony' (2)	AB007120	Jan 12, 2012	202.63 KB
Pages disponibles pour le catalogue 'Harmony' (3)	AB007120	Nov 30, 2011	405.13 KB
2012 - Harmony series (1)	SA0207121012108	Nov 30, 2011	21.06 KB
2012 - Harmony series (2)	SA0207121012109	Nov 30, 2011	18.06 KB
2012 - Harmony series (3)	SA0207121012110	Nov 30, 2011	180.14 KB
2012 - Harmony series (4)	SA0207121012111	Nov 30, 2011	214.16 KB
2012 - Harmony series (5)	SA0207121012112	Nov 30, 2011	684.42 KB
2012 - Harmony series (6)	SA0207121012113	Nov 30, 2011	11.06 KB
2012 - Harmony series (7)	SA0207121012114	Nov 30, 2011	11.06 KB
2012 - Harmony series (8)	SA0207121012115	Nov 30, 2011	102.16 KB
2012 - Harmony series (9)	SA0207121012116	Nov 30, 2011	13.05 KB



## Essential guides



Dynamic catalogs



Certificates



Technical publications

# Compare, select, and compile



Path: [www.schneider-electric.com](http://www.schneider-electric.com) > **Products and Services** > Automation and control > ... > Harmony XB4\*

**Compare**  
technical  
characteristics

**Select**  
and store  
your products  
into  
the basket



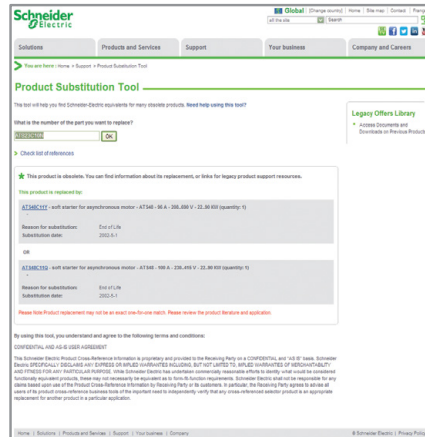
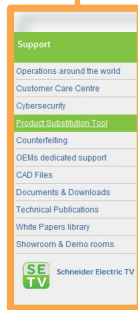
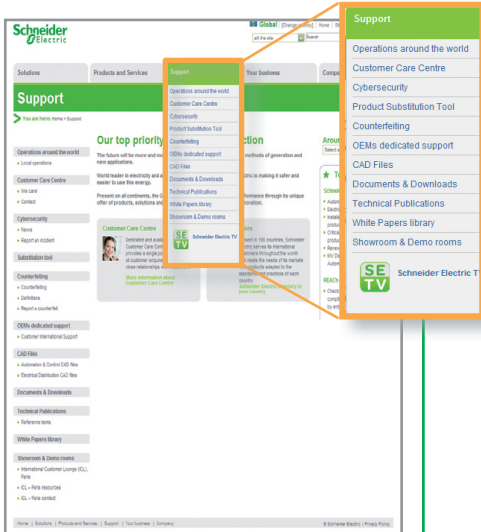
**Compile**  
data sheets  
in a unique  
document

\* Example of research on a product

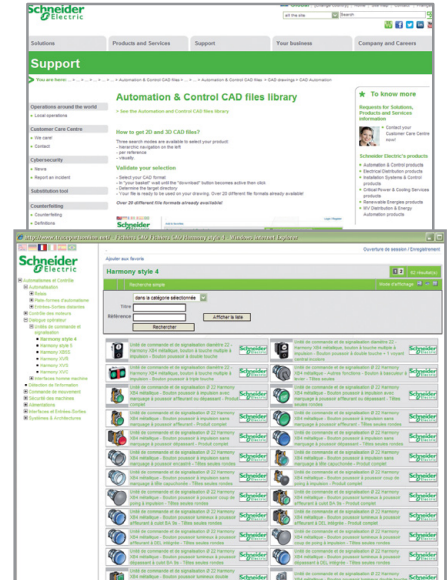
# Check the product status, design your equipment



Path: [www.schneider-electric.com](http://www.schneider-electric.com) > **Support** > Product Substitution Tool  
 Path: [www.schneider-electric.com](http://www.schneider-electric.com) > **Support** > CAD files



**Product status:**  
 indicate whether the product is still commercialized. Otherwise, the tool suggests a product substitution.



**CAD files:**  
 available in various formats they will be easily integrated into your installation design software.

Please note that references to products and services are just examples.

**B****BMXXCAUSBH018** 12**H****HMIS5T** 11**HMIS65** 11**HMIS65W** 11**HMIS85** 11**HMIS85W** 11**HMISTO501** 10**HMISTO511** 10**HMISTO512** 10**HMISTO531** 10**HMISTO532** 10**HMISTU655** 10**HMISTU655W** 10**HMISTU855** 10**HMISTU855W** 10**HMIZS50** 11**HMIZS60** 11**HMIZS61** 11**HMIZS62** 11**HMIZSCLP1** 11**HMIZSCLP3** 11**HMIZSPWO** 12**HMIZSUKIT** 11**HMIZSUSBB** 12**HMIZURS** 12**S****SR2CBL09** 13**X****XBTZ980** 13**XBTZ3002** 12**XBTZ9715** 13**XBTZ9733** 13**XBTZ9734** 13**XBTZ9743** 13**XBTZ9780** 13**XBTZ9782** 13**XBTZ9980** 13**XBTZ9982** 13**XBTZG935** 12**XBTZG9721** 13**XBTZGPWS1** 12**XBTZGUSB** 12**Z****ZB5AZ901** 11**ZB5AZ905** 11



**Schneider Electric Industries SAS**

Head Office  
35, rue Joseph Monier  
F-92500 Rueil-Malmaison  
France

[www.schneider-electric.com](http://www.schneider-electric.com)

The information provided in this documentation contains general descriptions and/or technical characteristics of the performance of the products contained herein. This documentation is not intended as a substitute for and is not to be used for determining suitability or reliability of these products for specific user applications. It is the duty of any such user or integrator to perform the appropriate and complete risk analysis, evaluation and testing of the products with respect to the relevant specific application or use thereof. Neither Schneider Electric nor any of its affiliates or subsidiaries shall be responsible or liable for misuse of the information contained herein.

Design: Schneider Electric  
Photos: Schneider Electric  
Printed by:

DIA5ED2130607EN

July 2013