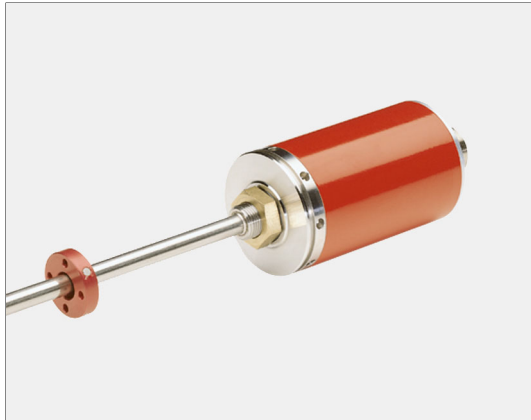
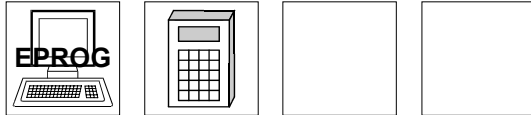


Linear-Encoder LA-66-K P

- **High Pressure Type, Makes it Possible for Installation into Hydraulic Cylinders**
- **For Linear Measurement**
- **Non Contact and Wear Free**
- **Programmable and Scaleable**
- **Parallel Interface**

7**Electrical Data**

Measurement Principle	Magnetostrictive
Measuring Length (Stroke) Standard (mm).....	150, 300, 500, 700, 750, 1000, 1500, 2000, 2500, 3000, > 3000 by request
Sensor Capacity	max. 20 Bit
* Resolution	max. 0.01 mm
Operating Voltage	19-27 V DC
Power Dissipation (No Load)	< 5 Watt
Programmable via RS485	IBM PC Compatible EPROG Software, PT-100N Programming Terminal
Output Code (programmable)	Binary, BCD, Gray
Output Options	Push-Pull, Open Collector, Open Emitter (max. 35 V)
Maximum Current.....	100 mA / Short Circuit Protected
Input Options	
* Forward / Reverse	Change direction of count
* Preset	Adjust absolute position to a given value
* Latch	Freezes data lines
* Bus.....	For multiplexing many encoders. Only to be used with Open Collector or Open Emitter Output drivers
Logic Levels	"0" < + 2 VDC, "1" > + 8 V DC, max. 30 VDC
Cycle Time	See Dimensional Drawings
Pin Configuration.....	Upon Request

* Programmable Parameters

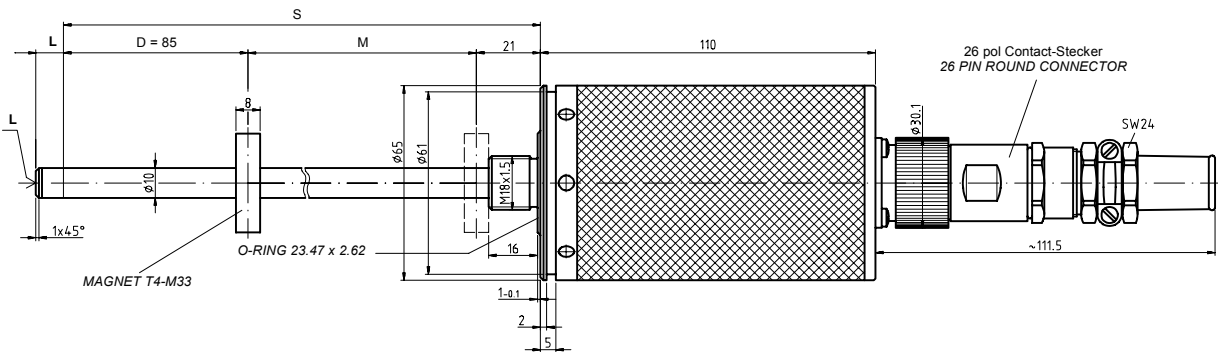
Environmental Data

Electromagnetic compatibility (EMC)	EN 61000-4-2 (IEC-801-2) / EN 61000-4-4 (IEC-801-4)
Operating Temperature	0°-70°C (32° to 158° F) (Optional -20° to +70°C) (-4° to 158° F)
Storage Temperature	-30° to +80°C (-22° to 178° F)
Relative Humidity	98 % (non condensing)
*Protection Class	IP 65 (DIN 40 050)
* The protection class of the sensor can be effected by the type of connector used.	

Mechanical Data

Linearity.....	< 0.05 % of Stroke Length
Repeatability.....	≤ 0.01 mm
Hysteresis.....	< 0.1 mm
Temperature Coefficient	< 5 µm / °C
Vibration (Sinus 50-2000 Hz)	
per DIN IEC 68-2-6.....	≤ 100 m/s ² (10g)
Shock (11ms) per DIN IEC 68-2-27.....	≤ 1000 m/s ² (100g)
Pressure Resistance (Option)	600 bar
Rod Material	Cr/Ni-alloy
Magnetic Field	< 3 mT (milli Tesla)
Operating Speed and Mounting Orientation	No restrictions
Magnet Type (Standard).....	T4-M33
Magnet Type(Option).....	T3-U64
Rod Mounting	Option
Mechanical Special Types.....	Upon Request
Connector	26 pin Contact Connector

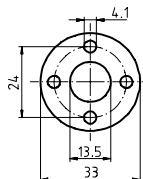
Dimensional Drawing



S = Stablänge
 D = Dämpfungszone: Keine Herstellergarantie für die Meßdaten
 M = Meßlänge: Typenbezogener Meßweg
 L = 5 mm Zusatzlänge mit M4x5 bei Option Stabspitzenlagerung

S = TOTAL LENGTH
 D = DAMPENING ZONE: IN THIS AREA NO MEASURING SIGNAL IS PRODUCED
 M = STROKE LENGTH
 L = 5 MM ADDITIONAL LENGTH WITH M4x5 FOR OPTION ROD MOUNTING

MAGNET T4-M33



Meßlänge M (mm) STROKE LENGTH M (mm)	Stablänge S (mm) TOTAL LENGTH S (MM)	Zykluszeit (ms) CYCLE (ms)
150	256	1,4
300	406	1,4
500	606	1,4
700	806	1,4
750	856	1,4
1000	1106	1,8
1500	1606	2,7
2000	2106	3,6
2500	2606	4,5
3000	3106	5,4