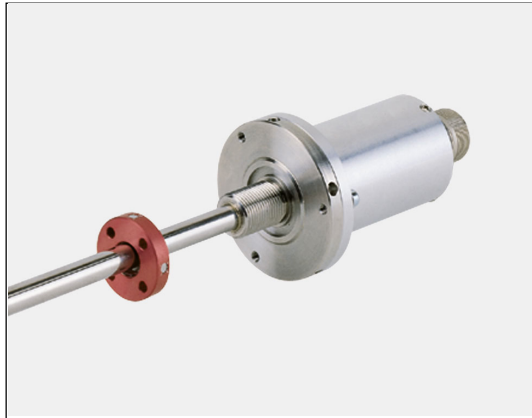
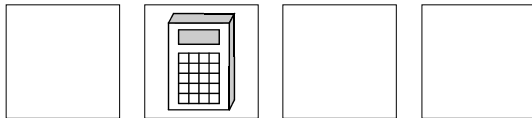


Linear-Encoder LA-65-H SSI



- **Special housing for mounting in hydraulic cylinders, easy interchangeability**
- **For Linear Measurement**
- **Non Contact and Wear Free**
- **Programmable, scaleable**
- **SSI (Synchronous-Serial Interface)**

7

Electrical Data

Measurement Principle	Magnetostrictive
Measuring Length (Stroke) Standard (mm).....	150, 300, 500, 700, 750, 1000, 1500, 2000, 2500, 3000 > 3000 by request
Sensor Capacity	max. 20 Bit
* Resolution	max. 0.01 mm
Operating Voltage	19-27 V DC
Power Dissipation (No Load)	< 5 Watt
Programmable via RS485	PT-100N Programming Terminal
* Output Code (programmable)	Binary, Gray, BCD
Clock Input	Opto Coupler
Clock Frequency	95 kHz - 1 MHz
Cycle Time	See Dimensional Drawing
Transmission Cable Length	Dependent on cable Cross Section, Shielding, Clock Frequency etc....
Data Output.....	RS422 (2-wire)
Input Options	
* Forward / Reverse	Change direction of count
* Preset	Adjust absolute position to a set value
Logic Levels	"0" < + 2 VDC, "1" > + 8 V DC, max. 30 VDC
Pin Configuration.....	Upon Request
* Programmable Parameters	

Environmental Data

Electromagnetic compatibility (EMC)	EN 61000-4-2 (IEC-801-2) / EN 61000-4-4 (IEC-801-4)
Operating Temperature	0°-70°C (32° to 158° F) (Optional -20° to +70°C) (-4° to 158° F)
Storage Temperature	-30° to +80°C (-22° to 178° F)
Relative Humidity	98 % (non condensing)
*Protection Class	IP 65 (DIN 40 050)
* The protection class of the sensor can be effected by the type of connector used.	

Mechanical Data

Linearity.....	< 0.05 % of Stroke Length
Repeatability.....	≤ 0.01 mm
Hysteresis.....	< 0.1 mm
Temperature Coefficient	< 5 µm / °C
Vibration (Sinus 50-2000 Hz)	
per DIN IEC 68-2-6.....	≤ 100 m/s ² (10g)
Shock (11ms) per DIN IEC 68-2-27.....	≤ 1000 m/s ² (100g)
Pressure Resistance (Option)	600 bar
Rod Material	Cr/Ni-alloy
Magnetic Field	< 3 mT (milli Tesla)
Operating Speed and Mounting Orientation	No restrictions
Magnet Type (Standard).....	T4-M33
Magnet Type(Option).....	T3-U64
Rod Mounting	Option
Mechanical Special Types.....	Upon Request
Connector.....	12 pin Contact Connector

Dimensional Drawing

