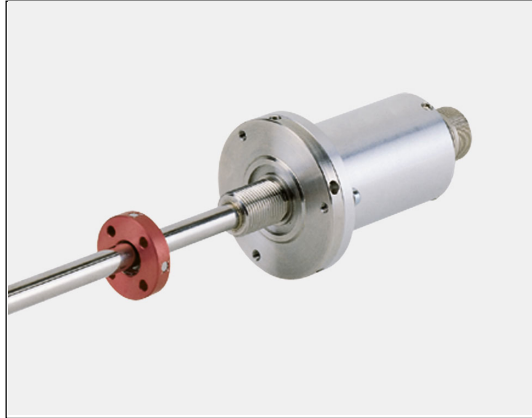
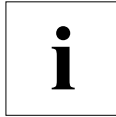


Linear-Encoder LA-65-H CANopen

- **Special housing for mounting in hydraulic cylinders, easy interchangeability**
- **For Linear Measurement**
- **Non Contact and Wear Free**
- **Programmable over the CAN-Bus**
- **CAN-Bus-Interface (CANopen-Protocol)**

Electrical Data

Measurement Principle	Magnetostrictive
Measuring Length (Stroke) Standard (mm).....	150, 300, 500, 700, 750, 1000, 1500, 2000, 2500, 3000 > 3000 by Request
Sensor Capacity	max. 20 Bit
Resolution	max. 0.01 mm
Operating Voltage	19-27 V DC
Power Dissipation (No Load)	< 5 Watt
Programming via CAN-Bus	CAN-Bus-Interface (ISO/DIS 11898)
Data Protocol	CAN 2.0 A Encoder CANopen Device Protocol CIA DS-406 V1.0
Output Code.....	Binary
Baud Rate (adjustable by switch).....	20 kbaud, Transmission Distance Up To 2500 m 125 kbaud, Transmission Distance Up To 500 m 500 kbaud, Transmission Distance Up To 100 m 1 Mbaud, Transmission Distance Up To 25 m
Programmable Parameters	
Count Direction	
Output Code	
Preset	
Cycle Time	See Dimensional Drawing
Pin Configuration.....	Upon Request

Environmental Data

Electromagnetic compatibility (EMC)	EN 61000-4-2 (IEC-801-2) / EN 61000-4-4 (IEC-801-4)
Operating Temperature	0°-70°C (32° to 158° F) (Optional -20° to +70°C) (-4° to 158° F)
Storage Temperature	-30° to +80°C (-22° to 178° F)
Relative Humidity	98 % (non condensing)
*Protection Class	IP 65 (DIN 40 050)
* The protection class of the sensor can be effected by the type of connector used.	

Mechanical Data

Linearity.....	< 0.05 % of Stroke Length
Repeatability.....	≤ 0.01 mm
Hysteresis.....	< 0.1 mm
Temperature Coefficient	< 5 µm / °C
Vibration (Sinus 50-2000 Hz)	
per DIN IEC 68-2-6.....	≤ 100 m/s ² (10g)
Shock (11ms) per DIN IEC 68-2-27.....	≤ 1000 m/s ² (100g)
Pressure Resistance (Option)	600 bar
Rod Material	Cr/Ni-alloy
Magnetic Field	< 3 mT (milli Tesla)
Operating Speed and Mounting Orientation	No restrictions
Magnet Type (Standard).....	T4-M33
Magnet Type (Option).....	T3-U64
Rod Mounting	Option
Mechanical Special Types.....	Upon Request
Connector.....	6 pin MIL-Connector

Dimensional Drawing

